



**SYMCOD**

1171 Notre-Dame West, P.O.B. 57  
Victoriaville, Quebec  
G6P 7L1

Telephone: (819) 751-0095

Fax: (819) 751-1292

## **TCP BOARD CONFIG**

Documentation Ver. 1.0a (Feb.19, 2002)



**Use this software with the product : LBC-02 V3 TCPIP**

Our Internet site: [http:// www.symcod.com/](http://www.symcod.com/)

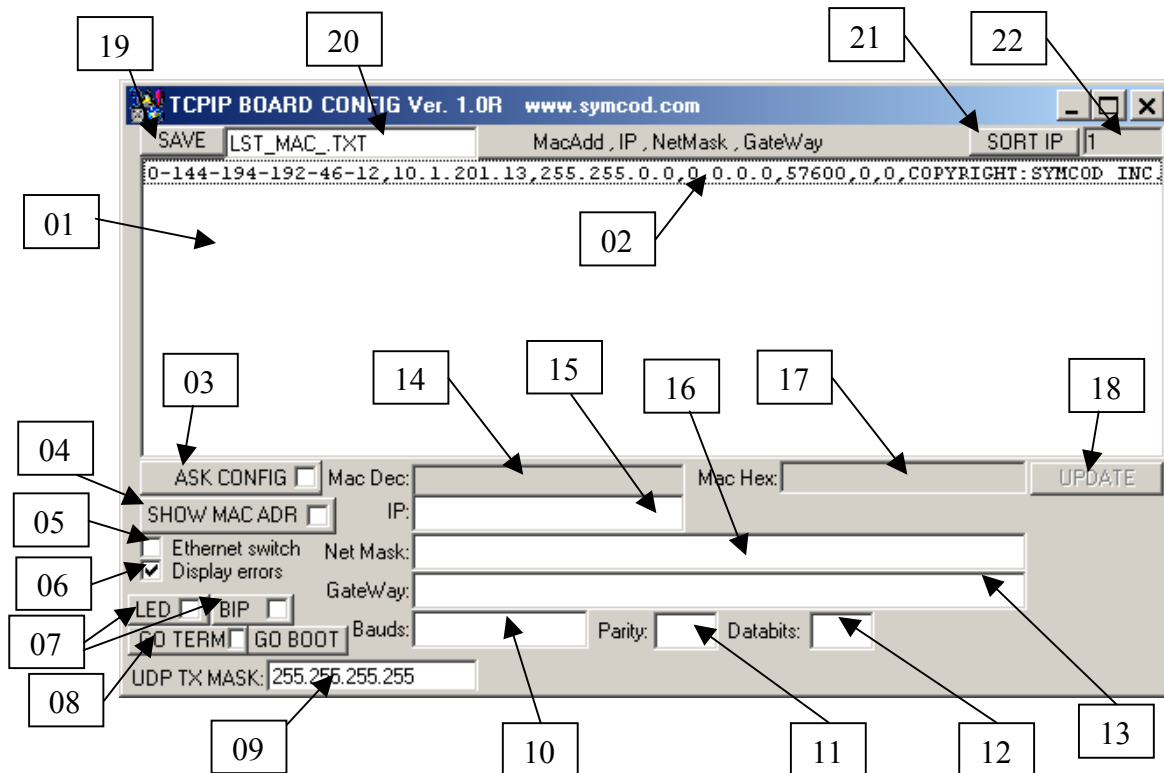
Programmer Analyst: Steve Bilodeau

### **Introduction**

Use this software to configure your TCPIP terminal. Each terminal must have a fixed IP address. Verify this with your network manager. In order for your computer to communicate with your terminals, it must be in the same address range as your terminals. A checkmark in a button causes it to apply automatically.

### **Steps in configuring a terminal:**

1. Select the terminal you want to configure from the list *01*
2. Enter the IP address to be assigned to the terminal in field 15
3. Change the Net Mask (*field no 16*) and the GateWay (*field no 13*) as needed
4. Click the UPDATE button (*Button no. 18*) to save the configuration in the terminal



### Description of screen 1.0

1. List of active terminals on the network.
2. Each line corresponds to a terminal on the network. Click on a line to change a terminal configuration.
3. Click this button to see the active terminals displayed in *window 01*.
4. Click this button to display the MAC ADR and IP address on each terminal screen. The terminal must be in TERMINAL mode (*button 08 GO TERM*).
5. If your network has ETHERNET SWITCHES, check this setting.
6. To see the errors encountered, enable this setting.
7. Causes all active terminals on the network to emit a BIP or to flash.
8. Makes all terminals switch to terminal mode.
9. This is the send MASK. **255.255.255.255** means all terminals.
10. Communication speed must always be **57600**.
11. This setting must always be **0**.
12. This setting must always be **0**.
13. If you have a GateWay on your server, enter it in this field, otherwise enter **0.0.0.0**.
14. This field shows the MAC ADDRESS of the terminal selected in *window 01* (decimal format).
15. Enter the IP address in this field that you want to assign to the selected terminal (*window 01*). Click on *UPDATE* to send the configuration to the terminal.
16. Enter the IP MASK in this field that you want to assign to the selected terminal (*window 01*). Click on *UPDATE* to send the configuration to the terminal.
17. This field shows the MAC ADDRESS of the terminal selected in *window 01* (hexadecimal format).
18. Click this button to send the configuration and save it in the selected terminal (*window 01*).
19. Click this button to save the list of active terminals on the network (*window 01*). The configuration will be saved under the name you choose (*field 20*).
20. Enter the file name to record the list generated by *option 19*.
21. Displays the terminals in *window 01* in order of IP address.
22. This field shows the number of active terminals on the network.