



1171 Notre-Dame O.
Victoriaville, Qc, CANADA
G6P 7L1

Telephone: (819) 751-0095 or 800-203-9421
Fax: (819) 751-1292



Symcod Vision Digital Display User and programmer manual

Documentation (26/04/2010)

Use this manual with the product : Vision Digital Display V1

Our Web site: <http://www.symcod.com/>

Programmer : Steve Bilodeau (Bill)
E-mail : sbill@symcod.com

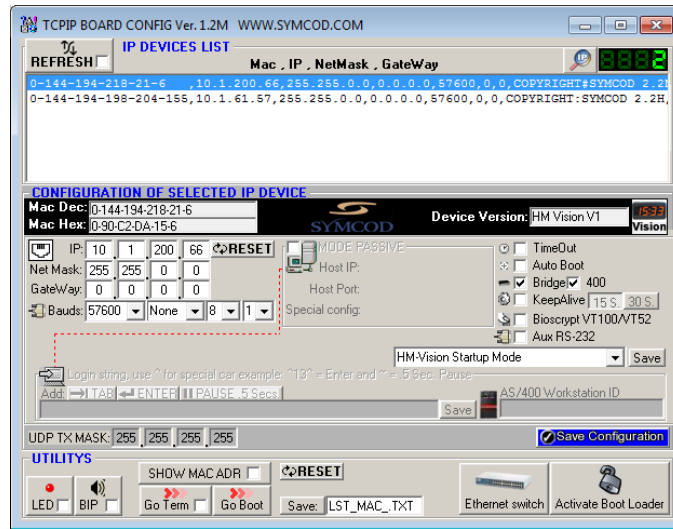
Product description

The Vision digital display is the solution to display time in enterprise synchronized (by broadcast) with the network of terminals LBC and/or with the server. The 2.3" digit height red or green color (software control) can be readily visible up to 75 feet. Other possibilities such as display machines numbers, machines speed, percentage (%), performances, production status, rejected material number, etc.



- Ethernet 10/100 BaseT
- Grey ABS case, red membrane
- RamMount stand
- 4 digits 2.3" (7 segments) HH:MM
- Red-green programmable display
- Visibility up to 75 ft
- Network synchronization
- 14-26VDC, 6 watts maximum

TCPIP unit configuration



TCPIP configuration with [Windows]:

With the help of Board Config software,

1. Select the unit in **IP DEVICES LIST**
2. Enter the desired TCPIP parameters for your Vision Digital Display.
3. Many modes are available for this product ; each mode meets distinct needs. To set the mode on the Vision Digital Display, you have to use the software Board Config



- Select the mode you want.
- Click on button: **Save**

4. Click on button: **Save Configuration** 

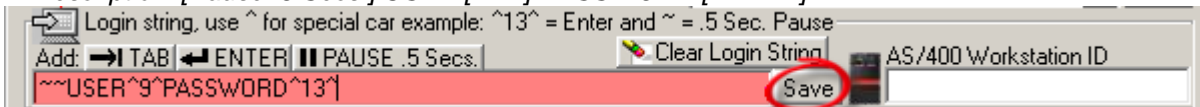
TCPIP configuration with [AS/400, Linux, Unix]:

With the help of Board Config software:

1. Select the unit in **IP DEVICES LIST**
2. Enter the **IP** and **Net Mask** of this terminal (**Bauds** = 57600 **Parity** = 0 **Datubits** = 0)
3. Check the **MODE ACTIVE**
4. Enter your **Host IP** and usually the **Host Port** is 23
5. Enter your **login string**

Example: `~~USER^9^PASSWORD^13^`

**** Description: [Pause .5 Secs.] USER [TAB] PASSWORD [ENTER]**



6. Click on button: **Save**
7. Click on button: **Save Configuration** 

Vision Digital Display communication

Communication with Symcod Library in **[Windows]**:

1. Add the Vision Digital Display like a LBC-02/IP (On main screen click on button [Add](#)).
2. Click on button Save Configuration.

Direct TCP communication:

1. Open a TCP connection on the IP address 1024 port of the Vision Digital Display.
2. Send the desired commands.

Direct UDP Unicast communication:

1. Send your command via a UDP connection on 1024 port.
2. Use this syntax: `Chr(254) + Chr(248) + Chr(8) + Chr(2) + COMMAND + Chr(3)`
** Replace the **COMMAND** by the command that you want sent.*

Control multiple Vision Digital Display with **[AS/400, Linux, Unix]**:

To control multiple Vision Digital Display it is recommended to use our software:
[Vision Digital Display library for AS-400 \(Bridge Windows and AS-400\)](#)

COMMANDS DESCRIPTION

Time adjustment command:

Syntax: ><EHHMMSS

HH = Hours

MM = Minutes

SS = Seconds

Example to send 01:02:03: ><E010203

Display String command:

Syntax: ><FSSSSXXCCCC00{ETX}

SSSS = String to display

**Display string can contain: "0123456789ABCDEFHIJKLOPQRSU- "*

XX = Unused future use

CCCC = Colour of each Digit contain 4 numbers from 0 to 6

0 = Red

1 = Green

2 = Red with dot

3 = Green with dot

4 = Flashing red

5 = Flashing green

6 = Flashing red / green

00 = Unused future use



Example to display 1 & 3 in green, 2 & 4 in red and the two points separating:
><F1234XX101200

Example to display 1 & 3 in green, 2 & 4 in red without the two points separating:
><F1234XX101000

Example to display 4 & 5 in green, 6 & 7 in red without the two points separating:
><F4567XX110000



Example to display 1234 in green without and the two points separating:
><F1234XX111300